

the
Hemlock
 starting at
\$380,000

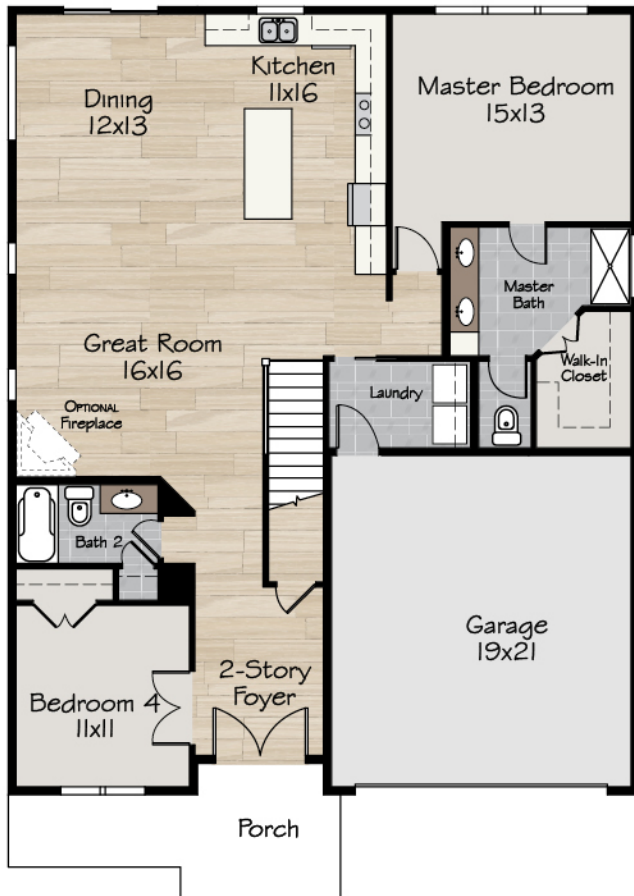
 4 Bed

 3 Bath

 2532 sq. ft.

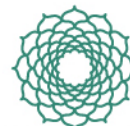
Main Floor
 1560 sq. ft.

Second Floor
 955 sq. ft.



DISCLAIMER FOR ALL ELEVATIONS & FLOOR PLANS

All square footage and room dimensions are approximate. Some plan changes and options will alter the approximate square footage. All elevations are artistic representations and do not necessarily reflect standard materials or styles. Builder reserves the right to make substitutions, change prices, products, & specifications without notice or obligation. Some features shown may be options; please refer to the list of special features & included options for complete list.



GOODISON PARK



EVERETT WOODS

