

the  
**Hemlock**  
 starting at  
**\$364,000**

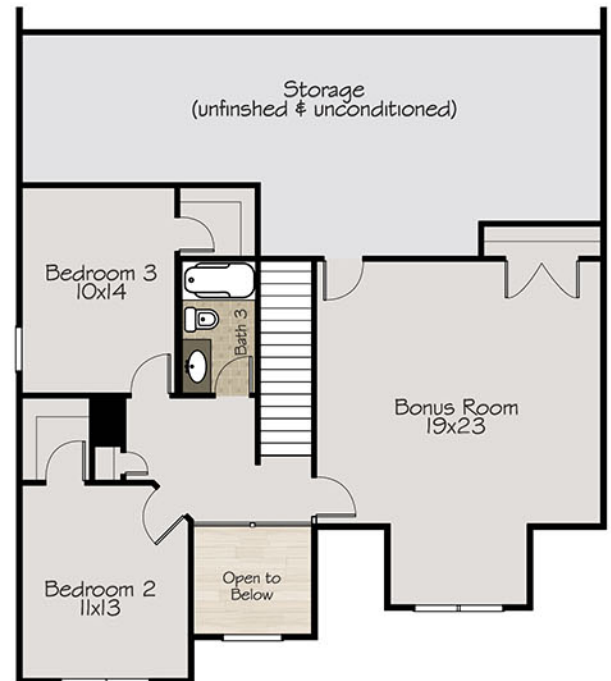
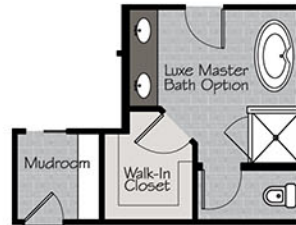
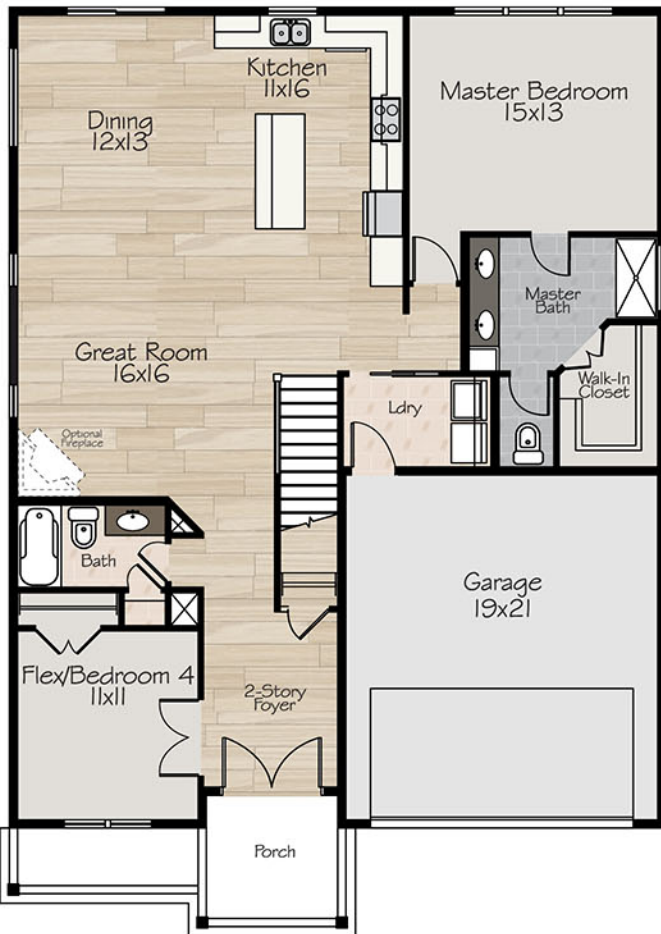
 4 Bed

 3 Bath

 2532 sq. ft.

**Main Floor**  
 1560 sq. ft.

**Second Floor**  
 955 sq. ft.



**DISCLAIMER FOR ALL ELEVATIONS & FLOOR PLANS**

All square footage and room dimensions are approximate. Some plan changes and options will alter the approximate square footage. All elevations, renderings, and/or drawings are artistic representations and do not necessarily reflect standard materials or styles. Builder reserves the right to make substitutions, change prices, products, & specifications without notice or obligation. Some features shown may be options; please refer to the list of special features & included options for complete list.



GOODISON PARK



EVERETT WOODS

